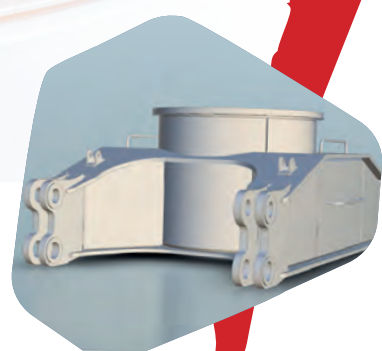
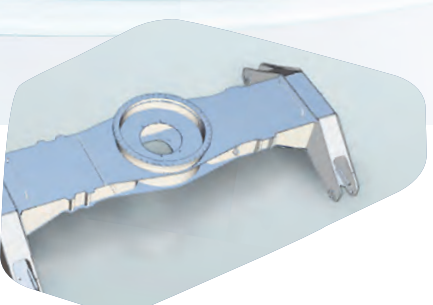
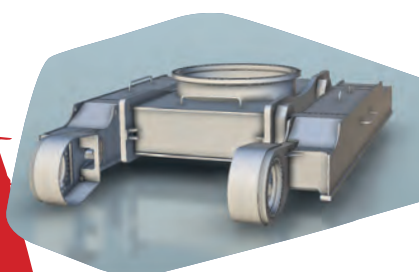
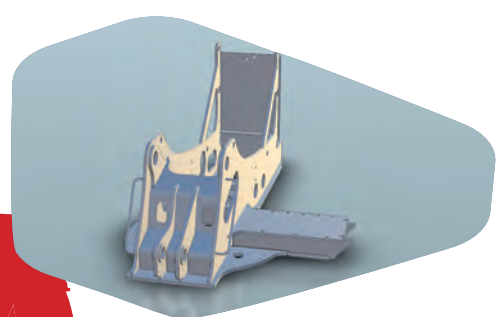
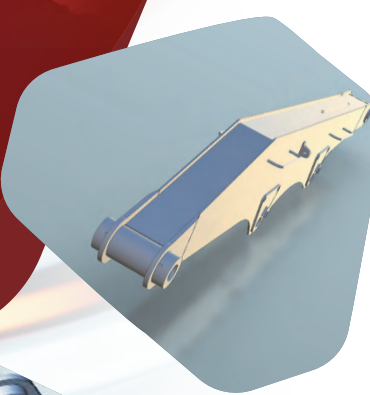


Precision in every step



Our Manufacturing Excellence



Our Workflow: Structured and Precise



At iw steelTEC A.S., we follow a structured and precise workflow to ensure the highest quality in every component we produce:



**Material procurement**

Sourcing materials according to your specifications and requirements



**Cutting**

Precision cutting for optimal material utilization



**Surface preparation**

Sandblasting to achieve a clean and durable surface.



**Welding assembly**

Performed with robotic and manual welding for maximum precision and strength.



**CNC machining**

Utilizing advanced CNC Bohrwerk technology, capable of handling components up to 12,000 mm in length



**Surface treatment**

Application of primer and final coating for long-lasting protection



**Packing**

Secure packaging to ensure safe transportation



**Global shipment**

Reliable delivery to customers worldwide



By continuously investing in the latest production techniques and technologies, we remain at the forefront of industry advancements. We also prioritize the professional development of our team through ongoing training programs, ensuring both technical excellence and sustainable growth.

We utilize modern IFS (ERP) software to monitor and control our entire production process, enabling us to maintain efficiency, ensure quality, and keep our promises to our customers.

Throughout the entire process, our dedicated quality team meticulously monitors and inspects each step, ensuring that every product meets the highest industry standards before reaching our customers.

Operating within a 10,000 m<sup>2</sup> covered facility, we are capable of processing 300 tons of sheet metal per month.

By integrating modern technology with expert craftsmanship, we guarantee efficiency, precision, and durability in every step of our production process.

**How can we be of service?**



Engineering & Workflow

Material procurement

Cutting

Surface preparation

Welding assembly

CNC machining

Surface treatment

Packing

Global shipment

How can we be of service?



IW ENGINEERING EXPERTS

Perfect Parts for Big Things





Founded in 2006, the iw-Group, with iw projekt GmbH as the leading enterprise, is a network of professional experts.

We specialize in engineering and manufacturing machinery and equipment for the steel industry and power plants.

Manufacturing takes place at our dedicated production Facility, IW SteelTEC A.S., located in Izmir, Turkey.

Our business model leverages global opportunities: efficient German engineering, combined with our systematic expertise in planning and design, is complemented by the cost advantages of production in Turkey.

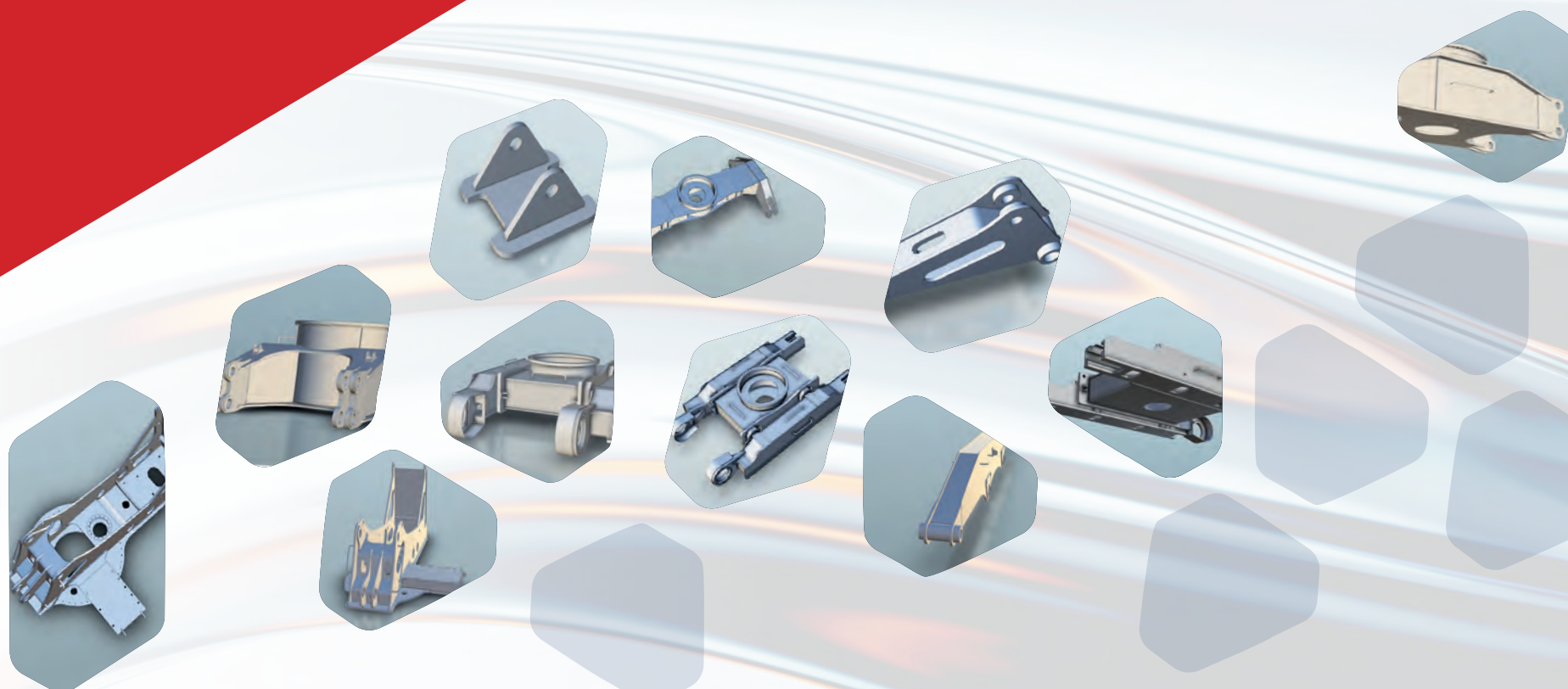
Years of close collaboration between our two companies have given us extensive experience, ensuring high-quality and on-time production.

**Combined with exceptionally attractive conditions and a reliable all-round service, this guarantees the successful completion of all tasks within the project framework.**

Another key advantage is our experience working with administrative bodies and authorities abroad, enabling expedited authorization processes.

**Every task entrusted to us is met with high-quality engineering, precision manufacturing, and a problem-solving approach that embraces creativity and flexibility.**

## Added Value, Reliable Quality



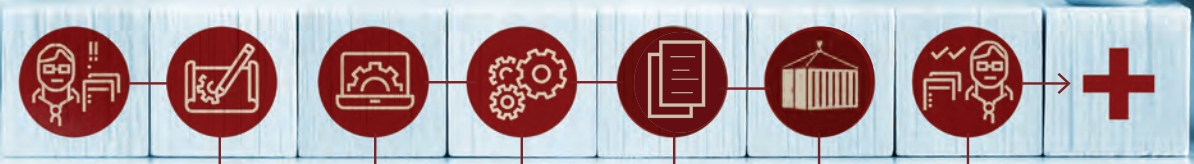
### ... perfect parts for your products!

Various Types of Frames for Construction Equipments

Weight of parts: 1.3 t – 6.0 t per piece

Meet us at:  
Hall A5  
Stand 132

Your requirement ...



- identify your specific requirements, such as components, materials, and services (for preparing an offer)
- detailed engineering using CAD tools (SolidWorks and AutoCAD)
- static calculations with FEM software (RFEM)

- manufacturing according to your required standards
- (pre)assembly
- preparation of all agreed and required documentation, coordination, and acceptance preparation

- Logistics and customs clearance management

... perfect solutions

Highly reliable, wherever we work.

### Capacity for Engineering and Manufacturing.

Throughout the entire project, you will have a dedicated representative who will coordinate all the details for you.

**You will also maintain complete control at all times, including the option to visit the production site whenever needed.**

Highly reliable everywhere we work.

### Capacities for Engineering and Manufacturing

**To supply all the necessary types of parts and frames for cranes, as well as additional requirements, we have extensive engineering and manufacturing capacities at multiple locations in Germany and Turkey.**

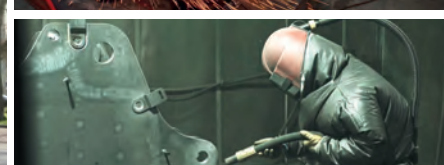
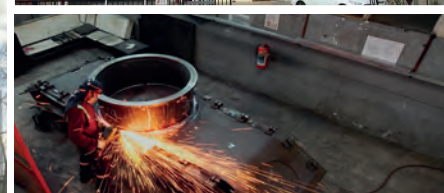
Our headquarters, with an experienced engineering department, is located in the innovation-driven city of Darmstadt, Rhein-Main. All of our manufacturing sites are located in Izmir, which boasts a modern and thriving industrial infrastructure, along with airport and harbor access.

**And we are growing.**



**iw projekt GmbH**  
– Headquarter–  
Sales and engineering

**iw steelTEC A.S.**  
Three sites for  
manufacturing



[iw-group.eu](http://iw-group.eu)



iw projekt GmbH  
Berliner Allee 47  
D-64295 Darmstadt | Germany  
[www.iw-projekt.com](http://www.iw-projekt.com)



iw steelTEC Makine San. ve Tic. A.Ş  
A.O.S.B. 10002 Sok. No:38  
TR-35620 Çiğli – İZMİR  
[www.iw-steeltec.com](http://www.iw-steeltec.com)



Count on the iw Group as a powerful supplier for your products.

Locations across Europe

5

Mio. €  
Turnover

20

Employees at iw Group

250+

Production area of up to (sqm)

15.000

Count on us for:

1. High-quality engineering solutions
2. Perfect parts tailored to your requirements
3. Comprehensive all-round service